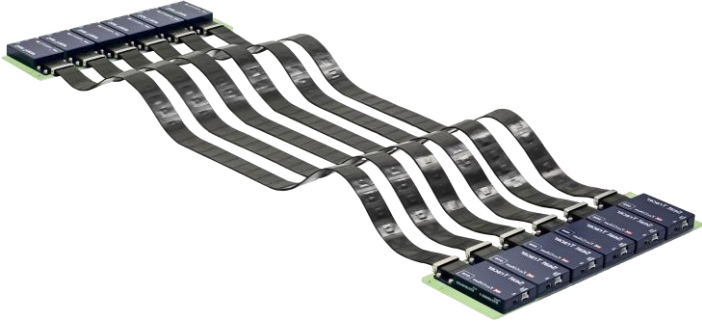


SEAT TRACER Package C

Geometry Sensing System



Easy Handling 3D Tape-shaped Sensing System !

Features

- ◇ Renewed Seat Tracer for easy handling
- ◇ Control boxes are arranged at 50mm pitch to combine 6 lines, enabling higher density measurement.
- ◇ Expanded up to 8 lines as an option, the combination with the backrest (one-end controller) model also possible.
- ◇ Pre-arranged sensor lines greatly saves time for setup.

Setup

Quick setup. Always ready to use!

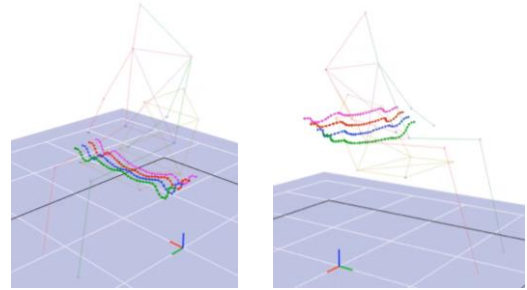
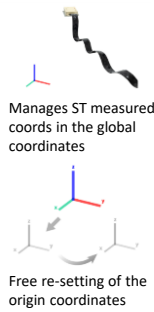


The amplifiers do not need to be removed from the frames.

Option

Application for Data Correction

Measured coordinates are integrated to simultaneously measured optical motion capture coordinates. This allows data management in global coordinates. Measuring and correcting the two positions at both ends reduces errors and improves dynamic tracking performance. A fixed-point correction version is also available.

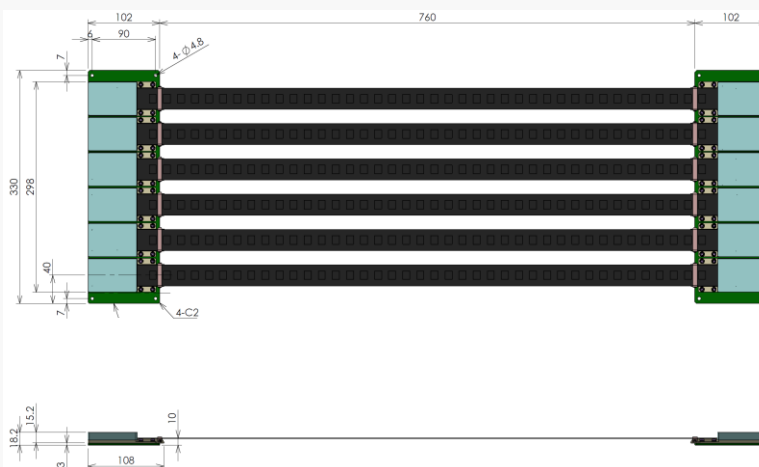


*Contact us for compatible motion capture systems

Specifications

System	
Product name	Seat Tracer Package C
Sampling frequency	1KHz (100Hz recommended)
Measuring methods	Manual (software), External trigger (contact IN/Out)
Components	ST2040C-1 (6) *Placed in the frame USB cable (12), USB Hub, Software(Measurement & Analysis), Storage case
Sensing	
Model	ST2040C-1
External dimensions	964 x 48 x 15 mm
Measuring distance	780mm
Integrated sensors	Inertial sensors (3-axis acceleration, 3-axis angular velocity)
Measuring range	Acceleration sensor: 2, 4, 8, 16G Angular velocity sensor: ±2000deg/s
Resolution	16-bit
Number of sensors	40
Sensor pitch	20mm
Power supply	USB
Current consumption	≤250mA
Operating temperature	0 to 50°C, ≤85RH (No condensing)

Dimensions



< Note >

- This product has flexible structure using a flexible circuit board.
- The sensors may cause failure as consumed as a result of trade-off between durability and flexibility.
- Calibration certificate cannot be issued since 3D shapes are calculated from measured data. Only an inspection report is issued using a specific shaped sample.

***The design and specifications are subject to change without prior notice.**

Tec Gihan Co., Ltd.

1-22 Nishinohata, Okubo-cho, Uji-city, Kyoto 611-0033 Japan

Tel: +81-774-48-2334

E-mail: eigyo@tecgihan.co.jp

URL: <http://www.tecgihan.co.jp/>

